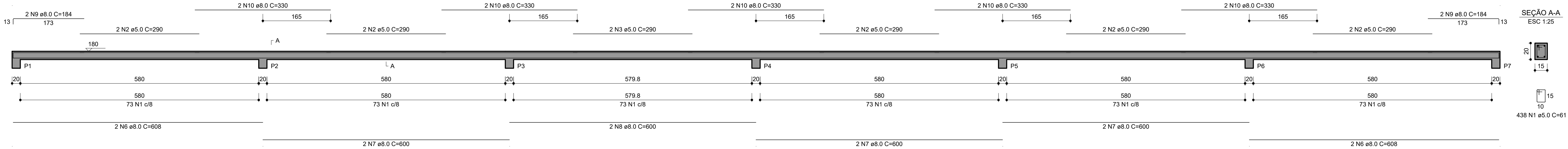
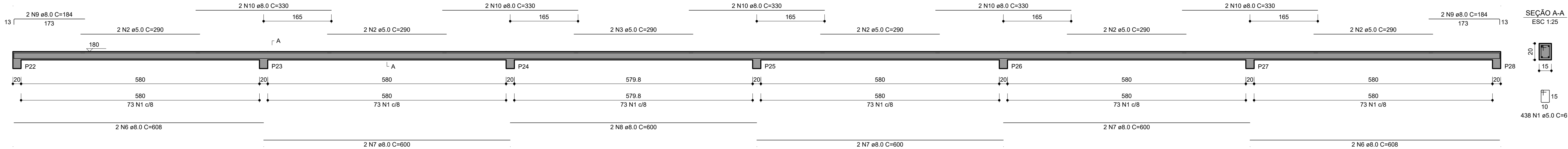


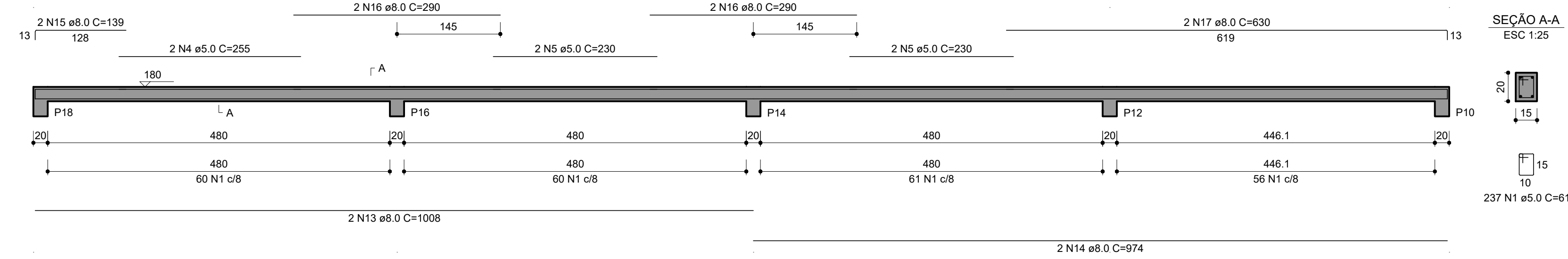
V1
ESC 1:50



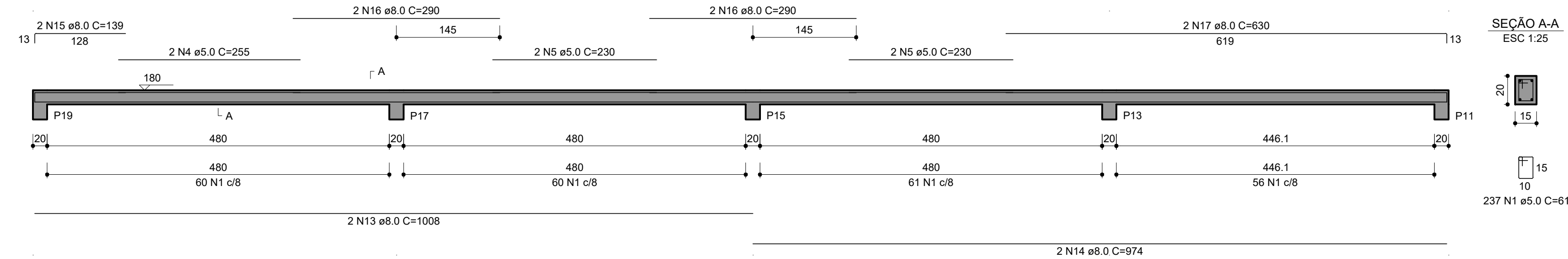
V2
ESC 1:50



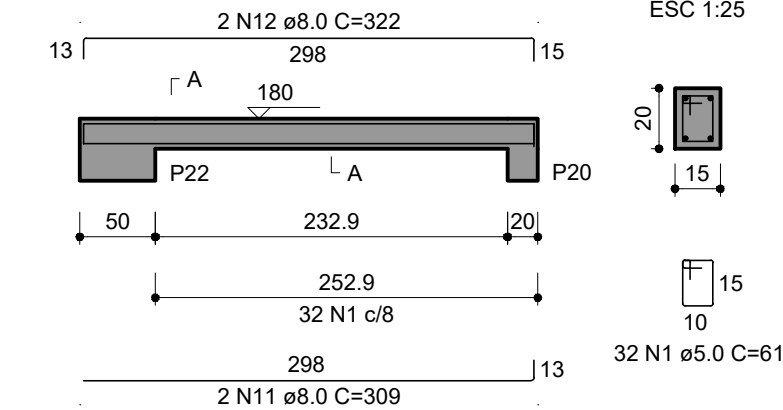
V4
ESC 1:50



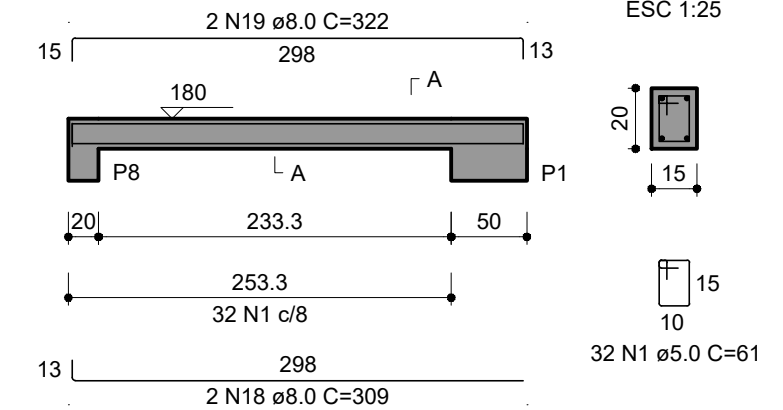
V7
ESC 1:50



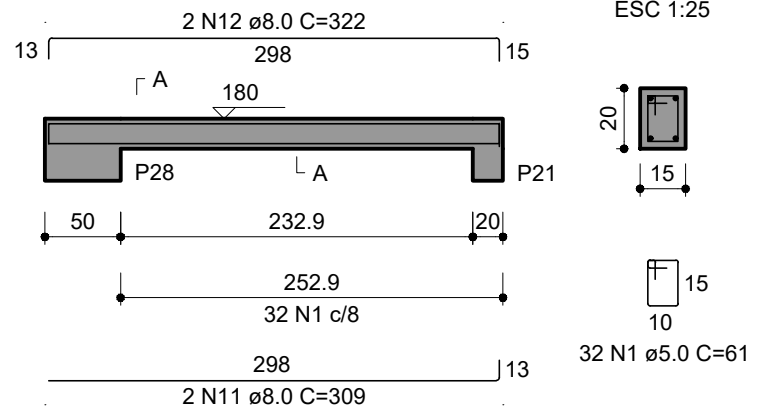
V3
ESC 1:50



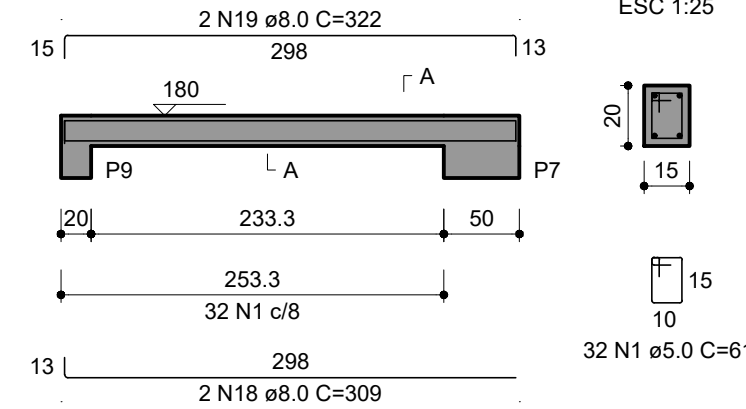
V5
ESC 1:50



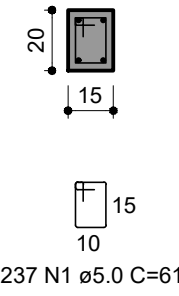
V6
ESC 1:50



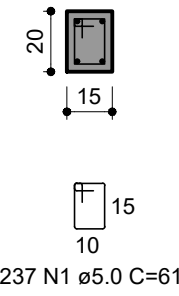
V8
ESC 1:50



SEÇÃO A-A
ESC 1:25



SEÇÃO A-A
ESC 1:25



RELAÇÃO DO AÇO

AÇO	N	DIAM (mm)	QUANT	C.UNIT (cm)	C.TOTAL (cm)
CA60	1	5.0	1478	61	90158
	2	5.0	20	290	5800
	3	5.0	4	290	1160
	4	5.0	4	255	1020
CA50	5	5.0	8	230	1840
	6	8.0	8	608	4864
	7	8.0	12	600	7200
	8	8.0	4	600	2400
	9	8.0	8	184	1472
	10	8.0	20	330	6600
	11	8.0	4	309	1236
	12	8.0	4	322	1288
	13	8.0	4	1008	4032
	14	8.0	4	974	3896
	15	8.0	4	139	556
	16	8.0	8	290	2320
	17	8.0	4	630	2520
	18	8.0	4	309	1236
	19	8.0	4	322	1288

RESUMO DO AÇO

AÇO	DIAM (mm)	C.TOTAL (m)	PESO + 10% (kg)
CA50	8.0	409.1	177.6
CA60	5.0	999.8	169.5
PESO TOTAL (kg)			
CA50		177.6	
CA60		169.5	

Volume de concreto (C-25) = 3.73 m³
Área de forma = 68.33 m²



PREFEITURA MUNICIPAL DE ARAPIRACA
SECRETARIA MUNICIPAL DE INFRAESTRUTURA - SEMINFRA

PROJETO ESTRUTURAL

Título/ Obra: QUADRA POLIESPORTIVA

Localização: PAU D'ARCO, ARAPIRACA-AL

Proprietário/ Responsável:

Prefeitura Municipal de Arapiraca - CNPJ: 12198693/ 0001-58

Dados do Projeto:
CONTRATO Nº 1006342-64/2013
ÁREA: 1.340,58

Assunto: DETALHES VIGAS DE NIVEL 180CM

Atenção: Conferir as Medidas no Local

Revisão: 00

Prancha Nº:

Desenho:

Data: OUT/2019

Escala: Indicada

06/06